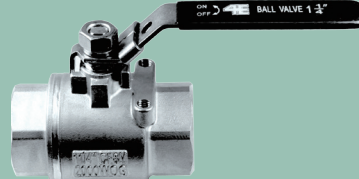
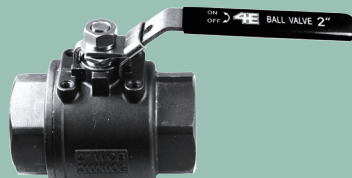
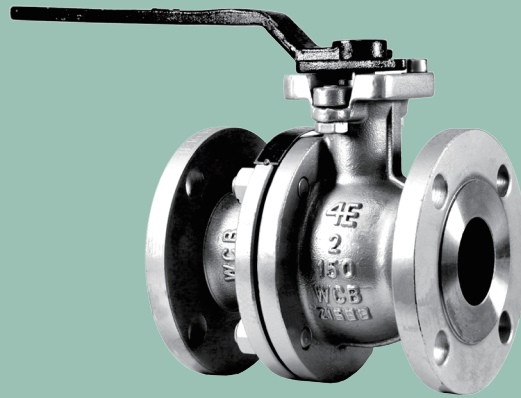




# BALL VALVES



4E Valve



**4E** Valve is a Texas Corporation Company located in Stafford, TX. Since 1993, 4Excellent Quality, 4Extraordinary Service, 4Expediant Delivery and 4Extensive Inventory is what many Industries have counted on for over decades 4E Valve. Our World-Wide Distributor Network which will be there for anyone who represent a Reliable Source of 4E Valve Products.

For Excellent Quality, 4E's API Certified manufacturing facilities are dedicated to exceeding applicable API, ANSI, ASTM and other industry standards. Our products come with a vigilant quality assurance program and Liability Insurance. 4E monitors its products from scratch to finish. And Our commitment to quality does not end at our factories where all 4E valves are tested in accordance with API 598. 4E scrutinizes material test reports and maintains an MTR Data Base System. Furthermore, 4E valves are selected periodically to undergo full non-destructive and destructive testing in accordance with ASTM A703 and API 598 at an independent laboratory to insure product integrity.

For Extraordinary Service, our trained professionals are ready to provide immediate answers to your inquiries. 4E strives to quote within the hour of receiving large inquiries via email, fax or any means of communication.

For Expediant Delivery, 4E dispatches valves from stock within 24 hours after placement of order.

For Extensive Inventory, 4E maintains a significant inventory of valves in Houston, TX and our products are available from 4E distributors and agents in the the United States, North America and overseas.

**4EXCELLENT**  
**4EXTRAORDINARY**  
**4EXPEDIANT**  
**4EXTENSIVE**



# 4E MANUFACTURER



- a.
- b.
- c.
- d.

## 4E Manufacturer's

- a. Foundry
- b. Machining Center
- c. Testing Stations

## 4E U.S.A.

- d. 4E New Warehouse in Houston (2019)



## CONTACT 4E

### New Warehouse Ready by Fall 2019

At the junction of Fort Bend Parkway Toll Road and Beltway 8, Houston, TX.



### Call us

+1(281)494-4300  
800-496-4042

### Fax us

+1(281)494-0090

### Email us

joe@4evalve.com  
jenny@4evalve.com  
william@4evalve.com  
sales@4evalve.com  
ben@4evalve.com

### U.S.A Office

10700 Corporate Dr. #124  
Stafford, TX 77477  
U.S.A.

### Check Our Website

[www.4Evalve.com](http://www.4Evalve.com)



# 4E Ball Valves - Index

## 4E API WCB Floating Ball Valves



### 150# BALL VALVE

WCB IS 2"- 10"

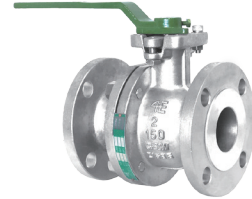
FIG.# 4E-41WCB16RGF-2F



### 300# BALL VALVE

WCB IS 2"- 10"

FIG.# 4E-43WCB16RGF-2F



### 150# BALL VALVE

SS316 IS 2"- 6" | BO 8"

FIG.# 4E-41C8M16RGF-2F

## 4E Small Ball Valves, Nace, 1000 - 2000 PSI



### 2000PSI 2PC CF8M FULL PORT

IS 1/4" - 2"

FIG.# 4E-420C8M16RPT  
-2F



### 1000PSI 1PC CF8M REDUCED PORT

IS 1/4" - 2"

FIG.# 4E-410C8M16PPT  
-1R



### 2000PSI 2PC WCB FP 304/316 BALL

IS 1/4" - 2"

FIG.# 4E-420WCB16(04)  
RPT-2F



### 2000PSI 1PC WCB REDUCED PORT

IS 1/4" - 2"

FIG.# 4E-420FG016RRT  
-1R

## 4E Small Ball Valves, 3000 PSI



### 3000PSI 2PC CF8M FULL PORT

IS 1/4" - 2"

FIG.# 4E-430C8M16DGT  
-2F



### 3000PSI 2PC WCB FULL PORT

IS 1/4" - 2"

FIG.# 4E-430WCB16DGT  
-2F

## Incoming 4E Ball Valves

**4E TRUNNION BALL VALVE**  
**4E 6000PSI WCB & CF8M BALL VALVE**  
**4E 300# CF8M FLOATING BALL VALVE**  
**4E 600# WCB FLOATING BALL VALVE**

IS - IN STOCK  
BO - BACK ORDER

# How to Order 4E Ball Valves



Please use 4E figure numbers to ensure accurate processing of your order. The figures show on this key covers basic features of 4E Ball Valves. A detailed description must accompany any special orders.

I      II      III      IV      V      VI      VII      VIII      IX

4E - 1/2" - 4 30 WCB 16 D G T - 2 F

4E - 1/2" - 430WCB16DGT - 2F

**Example:** Floating ball valve, 1/2", 3000 psi, cast steel body with stainless steel 316 ball, Delrin seat and graphite packing, threaded, two piece body and full port.

I	VALVE TYPE
4	Floating Ball Valve

II	PRESSURE CLASS
1	Class 150
3	Class 300
6	Class 600
10	1000 Psi
20	2000 Psi
30	3000 Psi
50	5000 Psi
60	6000 Psi

III	BODY MATERIAL	
<b>WCB</b>	A216 WCB	Cast Carbon Steel
<b>C8M</b>	A351 CF8M	Cast 316
<b>DF3</b>	A395	Cast Ductile Iron
<b>FG0</b>	F105	Forged Carbon Steel
<b>F16</b>	A182	Forged 316/316L

IV	BALL & STEM MATERIAL	
04	304 Stainless Steel	
16	316 Stainless Steel	

V	SEAT MATERIAL	
P	PTFE	
R	RPTFE	
D	DELIRIN	
V	VITON	

VI	PACKING/STEM SEAL MATERIAL	
P	PTFE	
R	RPTFE	
G	GRAPHITE	

VII	END CONNECTION	
F	Raised Face Flanged	
T	Threaded / FNPT	

VIII	TYPE	
1	1 PC.	One-piece/Unibody
2	2 PC.	Two-piece
3	3 PC.	Three-piece/Bolted

IX	PORT OPENING	
F	Full Port	
R	Reduced Port	



# CLASS 150 CAST STEEL BALL VALVE

**FIG.# 4E-41WCB16PGF-2F**

**Sizes: 2"-8" @ ANSI 150**

Carbon Steel Body, 316 Stainless Steel Ball, Nace  
 2-PCS, Floating Ball, Full Port, ISO 5211 Mounting Pad  
 Fire Safe Design and Anti-Static\*  
 Design and Manufacture: API 6D  
 Face to Face Dimensions: ASME B16.10  
 Flange Ends Dimensions: ASME B16.5  
 Fire Safe Test: API 607  
 Pressure Test: API 598

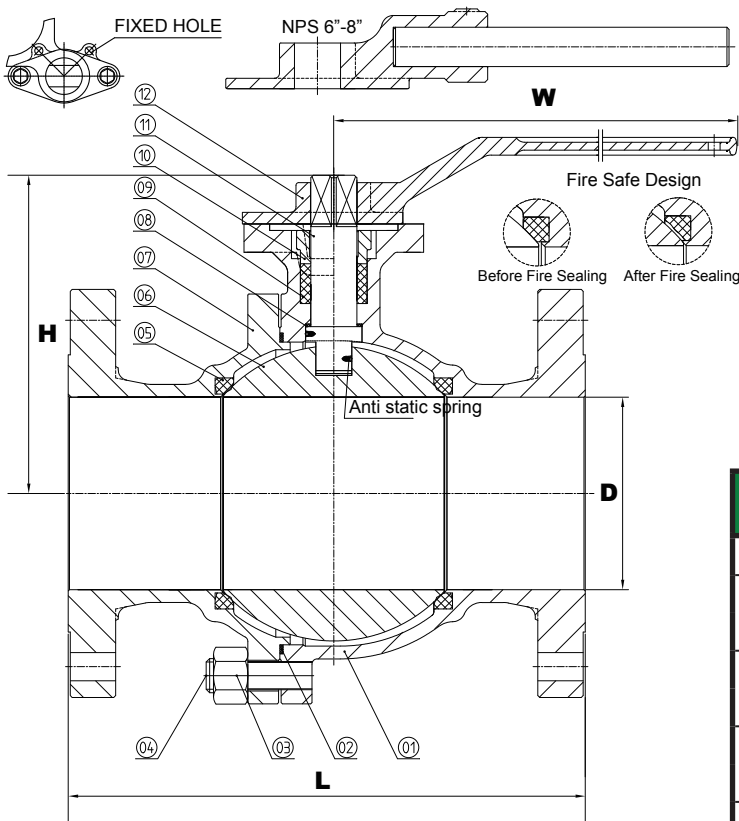
CLASS	Pressure Test (MPa)		
	Shell Test	Seat Test	Air Test
150 LB	3.0	2.2	0.6
Applicable Temperature	- 29°C (- 20°F) ~ 120°C (248°F)		
Applicable Media	W.O.G.		

## MATERIAL LIST

No.	Part Name	Material
1.	Body	A-216 WCB
2.	Body Gasket	SS 304 + Graphite   PTFE
3.	Nut	A194 - 2H
4.	Stud	A193 - B7
5.	Seat	PTFE   RPTFE
6.	Ball	A182 - F316
7.	Bonnet	A216 - WCB
8.	Thrust Washer	PTFE
9.	Packing	Graphite   RPTFE
10.	Gland	A216 - WCB
11.	Stem	SS 316
12.	Lever	A216 - WCB

## DIMENSIONS & WEIGHT

SIZE	unit	2"	2-2/1"	3"	4"	6"	8"
D	inch	2.01	2.52	2.99	4.02	5.98	7.99
	mm	51	64	76	102	152	203
L	inch	7.00	7.50	8.00	9.00	15.50	18.00
	mm	178	190	203	229	394	457
H	inch	5.51	6.50	7.01	9.06	12.20	13.78
	mm	140	165	178	230	310	350
W	inch	9.84	11.81	13.78	19.69	31.50	39.37
	mm	250	300	350	500	800	1000
Weight	lbs.	26.5	39.7	52.9	83.8	180.8	319.7
	kgs.	12	18	24	38	82	145
Torque	N·m	30	60	80	130	250	470



- NOTE:**
- 316 SS Trim and Others available upon request
  - Handwheel, lever and Gear Operator must be specified at the point of order.
  - Please specify the material of Body Gasket, Seat and Packing when placing your order, otherwise 4E will ship out products in accordance with our inventory.
  - Specifications subject to change without notice.

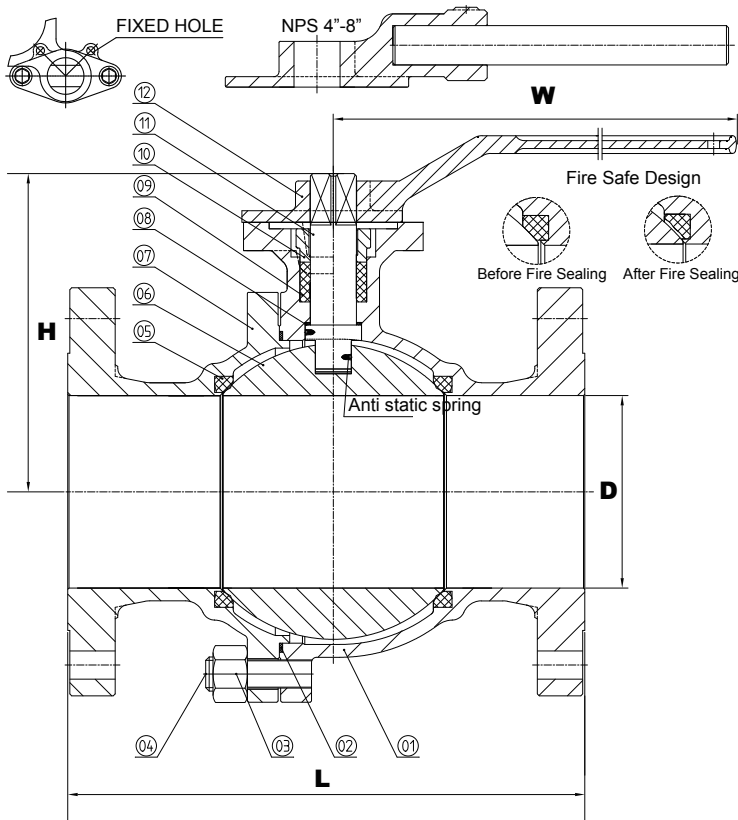
# CLASS 300 CAST STEEL BALL VALVE



**FIG.# 4E-43WCB16RGF-2F**  
**Sizes: 2"-8" @ ANSI 300**

Carbon Steel Body, 316 Stainless Steel Ball, Nace  
 2-PCS, Floating Ball, Full Port, ISO 5211 Mounting Pad  
 Fire Safe Design and Anti-Static\*  
 Design and Manufacture: API 6D  
 Face to Face Dimensions: ASME B16.10  
 Flange Ends Dimensions: ASME B16.5  
 Fire Safe Test: API 607  
 Pressure Test: API 598

CLASS	Pressure Test (MPa)		
	Shell Test	Seat Test	Air Test
300 LB	7.5	5.5	0.6
Applicable Temperature	- 29°C (- 20°F) ~ 120°C (248°F)		
Applicable Media	W.O.G.		



## MATERIAL LIST

No.	Part Name	Material
1.	Body	A-216 WCB
2.	Body Gasket	SS 304 + Graphite
3.	Nut	A194 - 2H
4.	Stud	A193 - B7
5.	Seat	RPTFE
6.	Ball	A182 - F316
7.	Bonnet	A216 - WCB
8.	Thrust Washer	PTFE
9.	Packing	Graphite   RPTFE
10.	Gland	A216 - WCB
11.	Stem	SS 316
12.	Lever	A216 - WCB

## DIMENSIONS & WEIGHT

SIZE	unit	2"	3"	4"	6"	8"
D	inch	2.01	2.99	4.02	5.98	7.99
	mm	51	76	102	152	203
L	inch	8.50	11.12	12.00	15.88	19.75
	mm	216	283	306	403	502
H	inch	5.59	7.01	9.06	12.20	13.78
	mm	142	178	230	310	350
W	inch	9.84	13.78	19.69	31.50	39.37
	mm	250	350	500	800	1000
Weight	lbs.	35.3	75.0	123.5	275.6	489.4
	kgs.	16	34	56	125	222
Torque	N-m	60	140	260	930	1550

**NOTE:** 1. 316 SS Trim and Others available upon request  
 2. Handwheel, lever and Gear Operator must be specified at the point of order.  
 3. Specifications subject to change without notice.



# CLASS 150 STAINLESS STEEL BALL VALVE

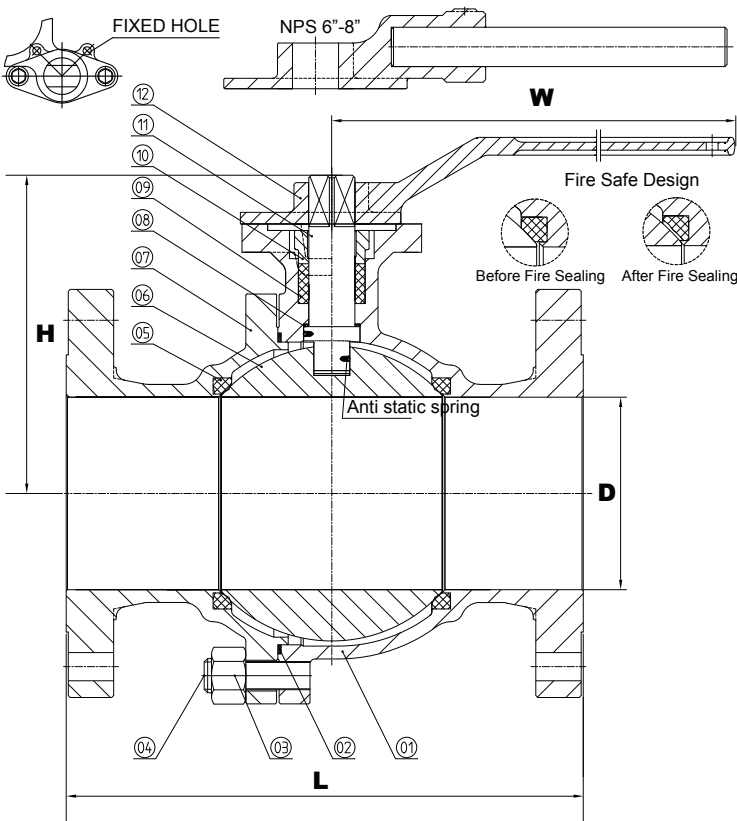
**FIG.# 4E-41C8M16RGF-2F**

**Sizes: 2"-8" @ ANSI 150**

316 Stainless Steel Body, Ball and Stem  
 2-PCS, Floating Ball, Full Port, Nace  
 ISO 5211 Mounting Pad  
 Fire Safe Design and Anti-Static\*  
 Design and Manufacture: API 6D  
 Face to Face Dimensions: ASME B16.10  
 Flange Ends Dimensions: ASME B16.5  
 Fire Safe Test: API 607  
 Pressure Test: API 598

CLASS	Pressure Test (MPa)		
	Shell Test	Seat Test	Air Test
150 LB	3.0	2.2	0.6
Applicable Temperature	- 29°C (- 20°F) ~ 120°C (248°F)		
Applicable Media	W.O.G.		

MATERIAL LIST		
No.	Part Name	Material
1.	Body	A351 CF8M
2.	Body Gasket	SS 316 + Graphite
3.	Nut	A194 - 8M
4.	Stud	A193 - B8M
5.	Seat	RPTFE
6.	Ball	A182 - F316
7.	Bonnet	A351 CF8M
8.	Thrust Washer	PTFE
9.	Packing	Graphite
10.	Gland	A351 CF8M
11.	Stem	SS 316
12.	Lever	A216 - WCB



DIMENSIONS & WEIGHT						
SIZE	unit	2"	3"	4"	6"	
D	inch	2.01	2.99	4.02	5.98	
	mm	51	76	102	152	
L	inch	7.00	8.00	9.00	15.50	
	mm	178	203	229	394	
H	inch	5.51	7.01	9.06	12.20	
	mm	140	178	230	310	
W	inch	9.84	13.78	19.69	31.50	
	mm	250	350	500	800	
Weight	lbs.	26.5	52.9	83.8	180.8	
	kgs.	12	24	38	82	
Torque	N·m	65	156	234	702	



**NOTE:** 1. Handwheel, lever and Gear Operator must be specified at the point of order.  
 2. Specifications subject to change without notice.



# 3000PSI 2PCS FP WCB/CF8M BALL VALVE



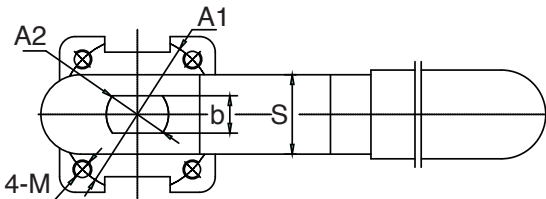
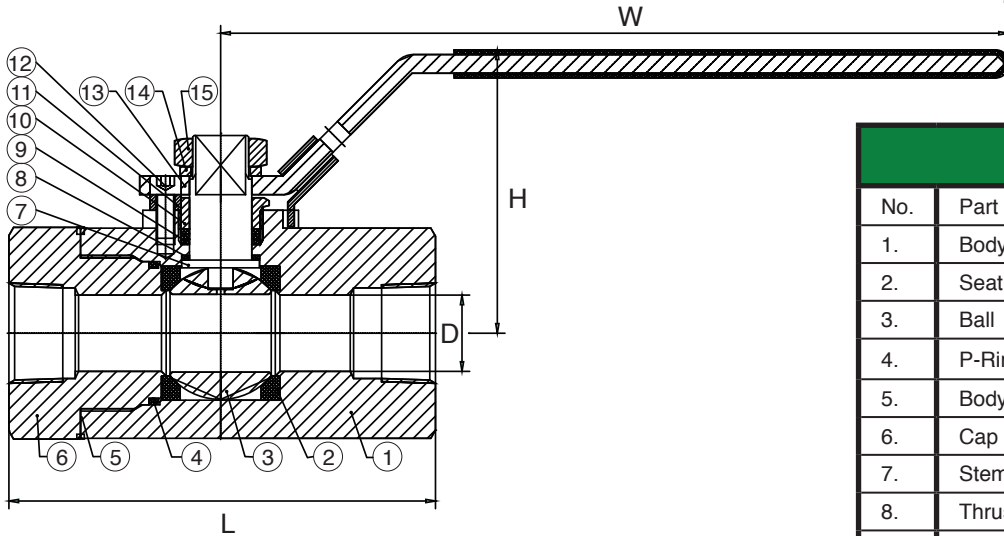
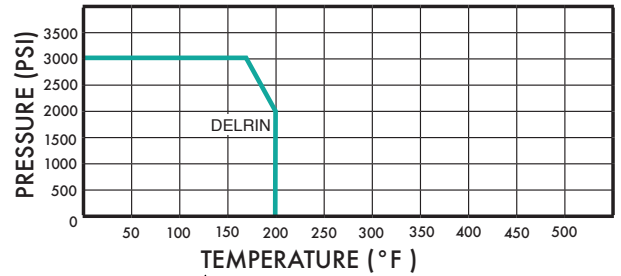
CF8M | WCB

FIG.# 4E-430C8M16DGT-2F | 4E-430WCB16DGT-2F

Sizes: 1/4" - 2" @3,000 PSI NSCWP

2-piece Body, Full Port, Blowout proof stem, Locking Handle, Fire Tested and Certified to API 607, Iso Mounting Pad, NPT Threads  
Conforms to ANSI B1.20.1, SEAL WELDED

Pressure Temperature Rating



MATERIAL LIST		
No.	Part Name	Material
1.	Body	A351 CF8M   A216 WCB
2.	Seat	Delrin
3.	Ball	A182 F216
4.	P-Ring	Viton
5.	Body Seal	Graphite
6.	Cap	A351 CF8M   A216 WCB
7.	Stem	A182 F216
8.	Thrust Washer	RPTFE
9.	Packing	Graphite
10.	Gland	Stainless Steel
11.	Pin Cover	Stainless Steel
12.	Pin Nut	A193 B7
13.	Handle	Stainless Steel
14.	Washer	Stainless Steel
15.	Nut	A2 - 70

Weights are approximate and construction is subject to change without notice.

DIMENSIONS									
SIZE	unit	1/4"	3/8"	1/2"	3/4"	1"	1-1/4"	1-1/2"	2"
D	mm	10	10	13	19	25	32	38	48
	inch	0.39	0.39	0.51	0.74	0.98	1.25	1.49	1.88
L	mm	98	98	98	108	137	137	160	160
	inch	3.85	3.85	3.85	4.25	5.39	5.39	6.29	6.29
H	mm	60	60	60	71	88	94	115	138
	inch	2.36	2.36	2.36	2.79	3.46	3.70	4.52	5.43
W	mm	147	147	147	190	190	228	268	370
	inch	5.78	5.78	5.78	7.48	7.48	8.97	10.55	14.56
Weight	kg.	0.95	0.94	0.86	1.50	2.50	3.30	5.55	7.60
	lbs.	2.07	2.04	1.87	3.26	5.43	7.17	12.07	16.52
Torque	N-m	15	16	18	27	35	50	50	90



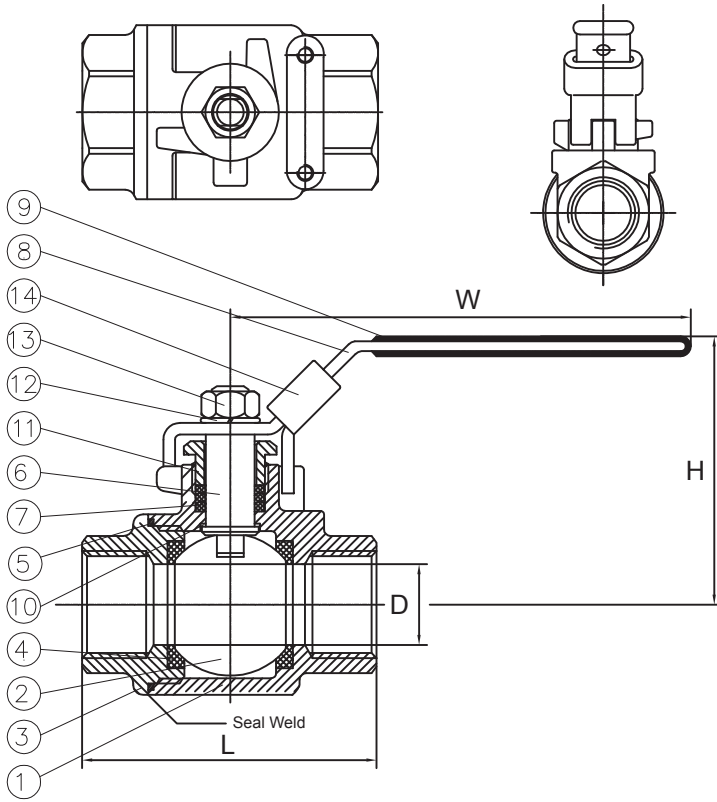


# 2000PSI 2PCS FP STAINLESS STEEL BALL VALVE

**FIG.# 4E-420C8M16RRT-2F**

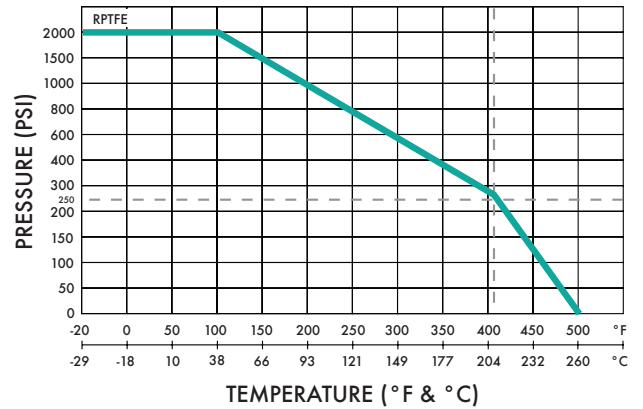
**Sizes: 1/4" - 2" @2,000 PSI NSCWP**

Seal-Welded available\*, 2-piece Body, Full Port  
Blowout proof stem, Locking Handle, Nace  
NPT Threads Conforms to ANSI B1.20.1, BS21



MATERIAL LIST		
No.	Part Name	Material
1.	Body	A351 CF8M
2.	Ball	SS 316
3.	End Cap	A351 CF8M
4.	Seat	RPTFE
5.	Packing	RPTFE
6.	Stem	SS 316
7.	Stem Seal	None
8.	Handle	SS
9.	Handle Cover	PVC
10.	Thrust Washer	RPTFE
11.	Gland Nut	SS
12.	Handle Washer	SS
13.	Handle Nut	A2-70
14.	Locking Pad	SS

**Pressure Temperature Rating**



Weights are approximate and construction is subject to change without notice.

DIMENSIONS									
SIZE	unit	1/4"	3/8"	1/2"	3/4"	1"	1-1/4"	1-1/2"	2"
D	mm	11.5	12.5	15.0	20.0	25.0	32.0	38.0	49.0
	inch	0.453	0.492	0.591	0.787	0.984	1.260	1.496	1.929
L	mm	62.0	62.0	64.0	72.0	90.0	102.0	115.0	135.0
	inch	2.441	2.441	2.520	2.835	3.543	4.016	4.528	5.315
H	mm	53.0	56.0	62.0	65.0	72.0	77.0	94.0	101.0
	inch	2.087	2.205	2.441	2.559	2.835	3.031	3.701	3.976
W	mm	95.0	107.0	101.0	119.0	145.0	148.0	160.0	180.
	inch	3.740	4.213	3.976	4.685	5.709	5.827	6.299	7.087
Weight	kg.	0.33	0.32	0.37	0.55	0.92	1.40	2.17	3.68
	lbs.	0.728	0.705	0.816	1.221	2.03	3.086	4.784	8.116
Torque	N-m	4.00	6.00	8.00	14.00	24.00	32.00	40.00	60.00



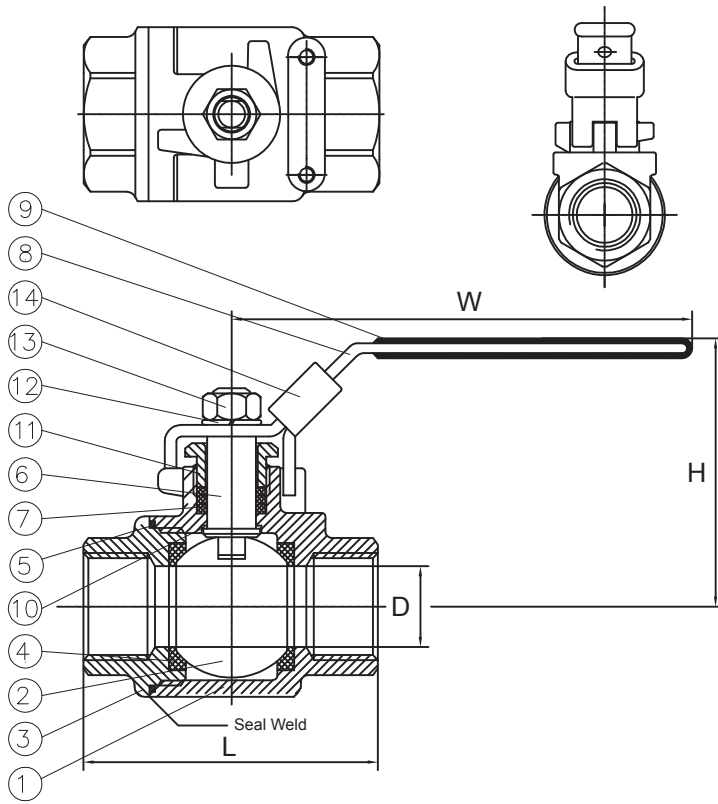
# 2000PSI 2PCS FP CAST STEEL BALL VALVE



## FIG.# 4E-420WCB16(04)RRT-2F

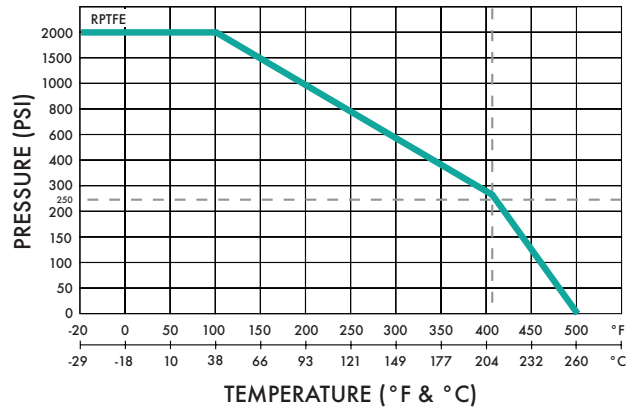
Sizes: 1/4" - 2" @2,000 PSI NSCWP

Seal-Welded available\*, 2-piece Body, Full Port  
 Blowout proof stem, Locking Handle, Nace  
 NPT Threads Conforms to ANSI B1.20.1, BS21, DN 259/2999



MATERIAL LIST		
No.	Part Name	Material
1.	Body	A216 WCB
2.	Ball	SS 316
3.	End Cap	A216 WCB
4.	Seat	RPTFE
5.	Packing	RPTFE
6.	Stem	SS 316
7.	Stem Seal	PTFE
8.	Handle	SS
9.	Handle Cover	PVC
10.	Thrust Washer	RPTFE
11.	Gland Nut	SS
12.	Handle Washer	SS
13.	Handle Nut	A2-70
14.	Locking Pad	SS

### Pressure Temperature Rating



Weights are approximate and construction is subject to change without notice.

DIMENSIONS									
SIZE	unit	1/4"	3/8"	1/2"	3/4"	1"	1-1/4"	1-1/2"	2"
D	mm	11.5	12.5	15.0	20.0	25.0	32.0	38.0	49.0
	inch	0.453	0.492	0.591	0.787	0.984	1.260	1.496	1.929
L	mm	62.0	62.0	64.0	72.0	90.0	102.0	115.0	135.0
	inch	2.441	2.441	2.520	2.835	3.543	4.016	4.528	5.315
H	mm	53.0	56.0	62.0	65.0	72.0	77.0	94.0	101.0
	inch	2.087	2.205	2.441	2.559	2.835	3.031	3.701	3.976
W	mm	95.0	107.0	101.0	119.0	145.0	148.0	160.0	180.
	inch	3.740	4.213	3.976	4.685	5.709	5.827	6.299	7.087
Weight	kg.	0.33	0.32	0.40	0.57	0.95	1.40	2.17	3.80
	lbs.	0.728	0.705	0.882	1.257	2.105	3.086	4.784	8.378
Torque	N-m	4.00	6.00	8.00	14.00	24.00	32.00	40.00	60.00



\*Please specify when placing your purchase order. 4E has both Seal-Welded and non-Seal Welded available in stock.

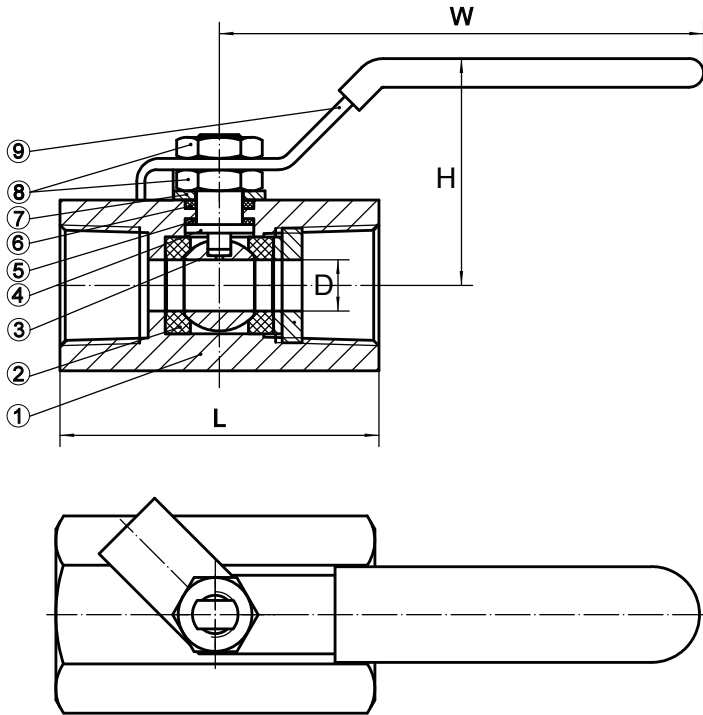


# 2000PSI 1PC RP FORGED STEEL BALL VALVE

**FIG.# 4E-420FGO16RRT-1R**

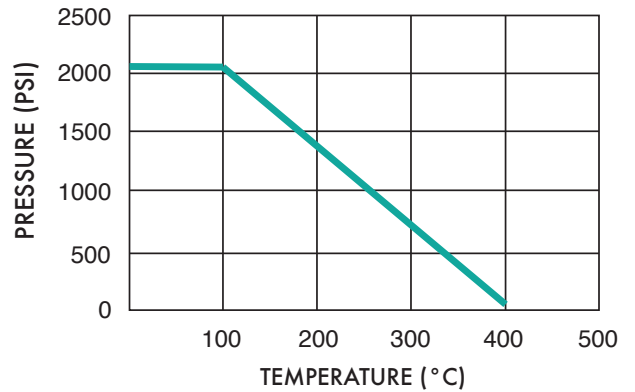
**Sizes: 1/4" - 2" @2,000 PSI NSCWP**

Forged Steel Body, Blowout proof stem  
 NPT end connections, Locking Handle, 1-Piece Body (Uni-  
 body), Reduced Port, Nace  
 NPT Threads Conforms to ANSI B1.20.1



MATERIAL LIST		
No.	Part Name	Material
1.	Body	A105
2.	Seat	RPTFE
3.	Ball	SS 316
4.	Stem	SS 316
5.	Thrust Washer	RPTFE
6.	Packing	RPTFE
7.	Gasket	SS
8.	Hex Nut	SS
9.	Handle	SS
10.	End Cap	A105

**Pressure Temperature Rating**



Weights are approximate and construction is subject to change without notice.

DIMENSIONS										
SIZE	unit	1/4"	3/8"	1/2"	3/4"	1"	1-1/4"	1-1/2"	2"	
D	mm	5.1	7.1	9.1	12.4	15.0	20.1	24.9	32.0	
	inch	0.20	0.28	0.36	0.49	0.59	0.79	0.98	1.26	
L	mm	42.9	47.0	63.0	70.1	86.1	94.0	102.1	113.0	
	inch	1.69	1.85	2.48	2.76	3.39	3.70	4.02	4.45	
H	mm	34.0	34.0	42.9	43.9	59.9	64.0	68.0	79.0	
	inch	1.34	1.34	1.69	1.73	2.36	2.52	2.68	3.11	
W	mm	84.1	84.1	93.0	100.1	119.9	134.9	152.1	169.9	
	inch	3.31	3.31	3.66	3.94	4.72	5.31	5.99	6.69	
Weight	kg.	0.12	0.17	0.31	0.48	0.94	1.37	1.70	2.90	
	lbs.	0.265	0.374	0.683	1.058	2.072	3.02	3.748	6.393	
Torque	N-m	2.00	3.00	6.00	8.00	12.00	16.00	20.00	30.00	



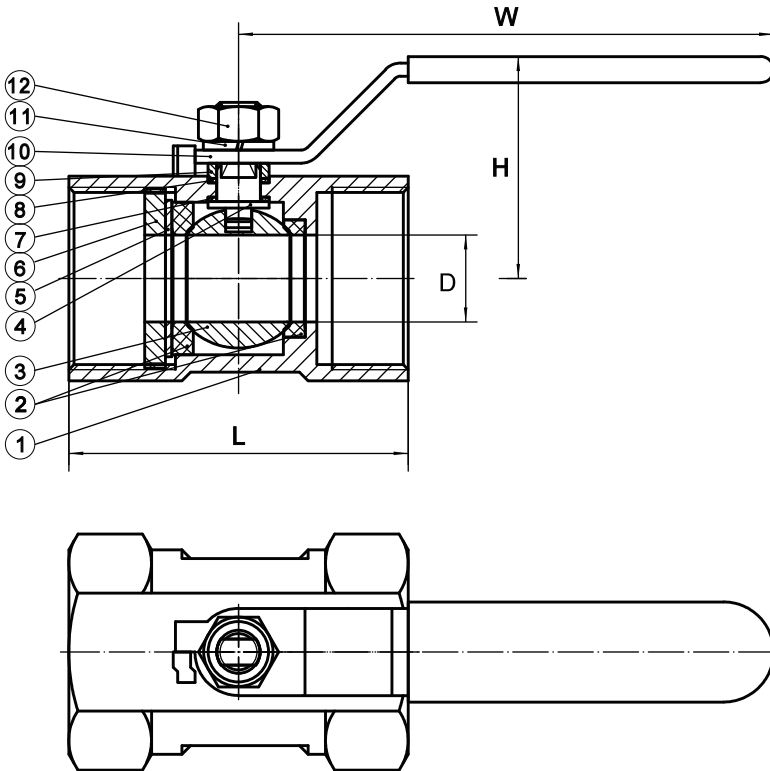
# 1000PSI 1PC RP STAINLESS STEEL BALL VALVE



**FIG.# 4E-410C8M16PP(RR)T-1R**

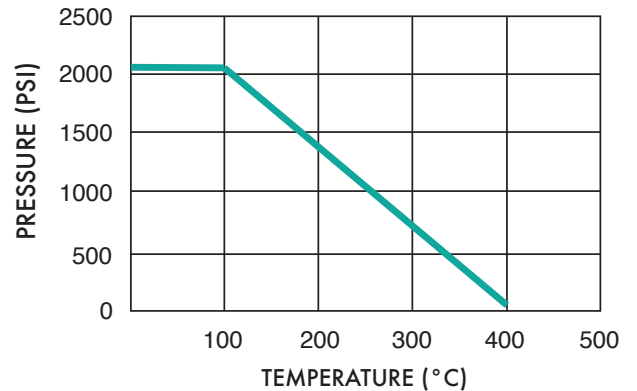
**Sizes: 1/4" - 2" @1,000 PSI NSCWP**

Full Stainless Steel, Blowout proof stem  
 Locking Handle, 1-Piece Body (Uni-body), Reduced Port  
 Nace, NPT Threads Conforms to ANSI B1.20.1



MATERIAL LIST		
No.	Part Name	Material
1.	Body	CF8M
2.	Seat	PTFE/RPTFE
3.	Ball	SS 316
4.	Stem	SS 316
5.	Gasket	SS 316
6.	End Cap	SS 316
7.	Thrust Washer	PTFE/RPTFE
8.	Packing	PTFE/RPTFE
9.	Packing Gland	SS
10.	Handle	SS
11.	Spring Washer	SS
12.	Hex Nut	SS

**Pressure Temperature Rating**



Weights are approximate and construction is subject to change without notice.

DIMENSIONS									
SIZE	unit	1/4"	3/8"	1/2"	3/4"	1"	1-1/4"	1-1/2"	2"
D	mm	5.1	7.1	9.1	12.4	15.0	20.1	24.9	32.0
	inch	0.20	0.28	0.36	0.49	0.59	0.79	0.98	1.26
L	mm	39.9	43.9	56.9	60.0	71.1	78.0	82.0	101.1
	inch	1.57	1.73	2.24	2.36	2.80	3.07	3.23	3.98
H	mm	27.9	27.9	39.1	39.9	47.0	56.9	60.0	67.1
	inch	1.10	1.10	1.54	1.57	1.85	2.24	2.36	2.64
W	mm	70.1	71.9	89.9	95.0	106.9	118.1	136.9	150.1
	inch	2.76	2.83	3.54	3.74	4.21	4.65	5.39	5.91
Weight	kg.	0.06	0.09	0.15	0.23	0.34	0.55	0.71	1.12
	lbs.	0.141	0.198	0.326	0.518	0.75	1.213	1.565	2.469
Torque	N-m	1.50	2.25	4.50	6.00	7.50	12.00	15.00	17.50





## Notes

4E 2-Pieces and 3-Pieces trunnion ball valves, Class 150 - Class 1500 are expected in our Houston warehouse by 2020.

## WARRANTY

LIMITED WARRANTY: 1. 4E Valve warrants to the original purchaser, for a period of one year from and after the date of delivery to the original purchaser, that its products will be free from defects in workmanship and materials, not caused or resulting from improper usage or application, improper installation, improper maintenance, repair, modification or alteration. In the event the original purchase shall determine that a product purchased from 4E is defective in workmanship or materials, the customer shall notify the 4E Warranty Representative within 24 hours from such determination, followed by written notice to such effect within 7 days therefrom, addressed to: 4E VALVE CO., P.O. BOX 721109, HOUSTON, TX 77272-1109.

2. In the event 4E shall determine that the product is defective based upon such examination of the product which 4E may deem appropriate, 4E shall thereupon, at its sole option, cause the defective product to be (a) repaired, (b) replaced with a substantially identical product, or (c) accept the return of a defective product and refund the purchasing price to the original purchaser, but shall in no event bear any installation, reinstallation, engineering or other costs incurred in connection with repair or replacement.

3. Since 4E shall not provided engineering and/or suitability of application or installation services for a purchaser; the selection, suitability, installation and fitness of all products sold by 4E shall be deemed to have been determined exclusively by and within the result from the selection, application, suitability, fitness or installation of its products.

4. The foregoing constitutes the sole obligation of 4E with respect to respect to defective products purchased from it and in no manner shall 4E assume or be liable for any other expenses, incidental or consequential damages, losses, lost profits, downtime or otherwise, whether directly or indirectly suffered, or in any other manner relating to or as the result of any defect or failure of any product that it may sell.

5. Except as otherwise provided herein, 4E MAKES NO WARRANTIES OR REPRESENTATION, WHETHER EXPRESS OR IMPLIED, OF ANY KIND WHATSOEVER WITH RESPECT TO GOODS AND PRODUCTS SOLD BY IT, INCLUDING WITHOUT LIMITATION, ANY WARRANTIES WITH RESPECT TO MERCHANTABILITY OR FITNESS FOR A PARTICULAR PURPOSE. NO PERSON IS AUTHORIZED TO GRANT OR EXTEND ANY WARRANTY OR REPRESENTATION ON BEHALF OF 4E OTHER THAN AS SET FORTH HEREIN.



# **BALL VALVES**

## **4E Valve**

[joe@4evalve.com](mailto:joe@4evalve.com) | [jenny@4evalve.com](mailto:jenny@4evalve.com) | [william@4evalve.com](mailto:william@4evalve.com) | [ben@4evalve.com](mailto:ben@4evalve.com) | [sales@4evalve.com](mailto:sales@4evalve.com)

**P. O. Box 721109  
Houston, Texas 77272-1109  
U. S. A.**

**phone +1(281)494-4300 | fax +1(281)494-0090**