

Flange Dimensions



Class 150 Flange Dimensions Fig. 1

Nominal Size	Unit	Bore A	Outside Dia. B	Thickness of Flange C	Raised Face Dia. D	Dia. of Bolted Circle E	Number of Bolted Holes	Dia. of Bolt G
2"	mm	51	152	19.1	92	120.5	4	19
	inch	2.00	6.00	0.75	3.62	4.75		3/4
2-1/2"	mm	64	178	22.5	105	139.5	4	19
	inch	2.50	7.00	0.88	4.12	5.50		3/4
3"	mm	76	190	24	127	152.5	4	19
	inch	3.00	7.50	0.94	5.00	6.00		3/4
4"	mm	102	229	24	157	190.5	8	19
	inch	4.00	9.00	0.94	6.19	7.50		3/4
5"	mm	127	254	24	186	216	8	22
	inch	5.00	10.00	0.94	7.31	8.50		7/8
6"	mm	152	279	26	216	241.5	8	22
	inch	6.00	11.00	1.00	8.50	9.50		7/8
8"	mm	203	343	29	270	298.5	8	22
	inch	8.00	13.50	1.12	10.62	11.75		7/8
10"	mm	254	406	30.3	324	362	12	25
	inch	10.00	16.00	1.19	12.75	14.25		1
12"	mm	305	483	32	381	432	12	25
	inch	12.00	19.00	1.25	15.00	17.00		1
14"	mm	337	535	35	413	476	12	29
	inch	13.25	19.00	1.38	16.25	18.75		1-1/8
16"	mm	387	597	37	470	540	16	29
	inch	15.25	23.50	1.44	18.25	21.25		1-1/8
18"	mm	438	635	40	533	578	16	32
	inch	17.25	25.00	1.56	21.00	22.75		1-1/4
20"	mm	489	699	43	584	635	20	32
	inch	19.25	27.50	1.69	23.00	25.00		1-1/4
24"	mm	591	813	48	692	749.5	20	35
	inch	23.25	32.00	1.88	27.25	29.50		1-3/8
26"	mm	642.9	870	68.5	749.3	806.5	24	35
	inch	25.25	34.25	2.69	29.5	31.75		1-3/8
28"	mm	692	927	71.5	800.1	863.6	28	35
	inch	27.25	36.50	2.81	31.50	34.00		1-3/8
30"	mm	743	984	74.7	857	914.4	28	35
	inch	29.25	38.75	2.94	33.75	36.00		1-3/8

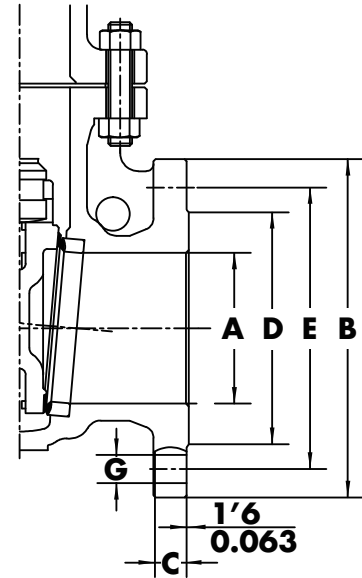


Fig. 1: Class 150 - 300

Class 300 Flange Dimensions Fig. 1

Nominal Size	Unit	Bore A	Outside Dia. B	Thickness of Flange C	Raised Face Dia. D	Dia. of Bolted Circle E	Number of Bolted Holes	Dia. of Bolt G
2"	mm	51	165	23	92	127	8	19
	inch	2.00	6.50	0.88	3.62	5.00		3/4
2-1/2"	mm	64	190	26	105	149	8	22
	inch	2.50	7.50	1.00	4.12	5.88		7/8
3"	mm	76	210	29	127	168.3	8	22
	inch	3.00	8.25	1.12	5.00	6.62		7/8
4"	mm	102	254	32	157	200	8	22
	inch	4.00	10.00	1.25	6.19	7.88		7/8
5"	mm	127	279	35	186	235	8	22
	inch	5.00	11.00	1.38	7.31	9.25		7/8
6"	mm	152	318	37	216	270	12	22
	inch	6.00	12.50	1.44	8.50	10.62		7/8
8"	mm	203	381	42	270	330	12	25
	inch	8.00	15.00	1.62	10.62	13.00		1
10"	mm	254	445	48	324	387.5	16	29
	inch	10.00	17.50	1.88	12.75	15.25		1-1/8
12"	mm	305	521	51	381	451	16	32
	inch	12.00	20.50	2.00	15.00	17.75		1-1/4
14"	mm	337	584	54	413	514.5	20	32
	inch	13.25	23.00	2.12	16.25	20.25		1-1/4
16"	mm	387	648	58	470	571	20	35
	inch	15.25	25.50	2.25	18.25	22.50		1-3/8
18"	mm	438	711	61	533	629	24	35
	inch	17.25	28.00	2.38	21.00	24.75		1-3/8
20"	mm	483	775	64	584	686	24	35
	inch	19.00	30.50	2.50	23.00	27.00		1-3/8
24"	mm	584	914	70	692	813	24	41
	inch	23.00	36.00	2.75	27.25	32.00		1-5/8
30"	mm	736.6	1092	95.2	857	997	28	48
	inch	29.00	43.00	3.63	33.75	39.25		1-7/8

Class 600 Flange Dimensions Fig. 2

Nominal Size	Unit	Bore A	Outside Dia. B	Thickness of Flange C	Raised Face Dia. D	Dia. of Bolted Circle E	Number of Bolted Holes	Dia. of Bolt G
2"	mm	51	165	26	92	127	8	19
	inch	2.00	6.50	1.00	3.62	5.00		3/4
2-1/2"	mm	64	190	29	105	149	8	22
	inch	2.50	7.50	1.12	4.12	5.88		7/8
3"	mm	76	210	32	127	168	8	22
	inch	3.00	8.25	1.25	5.00	6.62		7/8
4"	mm	102	273	38	157	216	8	25
	inch	4.00	10.75	1.50	6.19	8.50		1
5"	mm	127	330	44.5	186	266.5	8	29
	inch	5.00	13.00	1.75	7.31	10.50		1-1/8
6"	mm	152	356	48	216	292	12	29
	inch	6.00	14.00	1.88	8.50	11.50		1-1/8
8"	mm	200	419	56	270	349	12	32
	inch	7.87	16.50	2.19	10.62	13.75		1-1/4
10"	mm	248	508	64	324	432	16	35
	inch	9.75	20.00	2.50	12.75	17.00		1-3/8
12"	mm	298	559	67	381	489	20	35
	inch	11.75	22.00	2.62	15.00	19.25		1-3/8
14"	mm	327	603	70	413	527	20	38
	inch	12.87	23.75	2.75	16.25	20.75		1-1/2
16"	mm	375	686	77	470	603	20	41
	inch	14.75	27.00	3.00	18.5	23.75		1-1/2
18"	mm	419	743	83	533	654	20	44
	inch	16.50	29.25	3.25	21.00	25.75		1-3/4
20"	mm	464	813	89	584	724	24	44
	inch	18.25	32.00	3.50	23.00	28.50		1-3/4
24"	mm	559	940	102	692	838	24	52
	inch	22.00	37.00	4.00	27.25	33.00		2

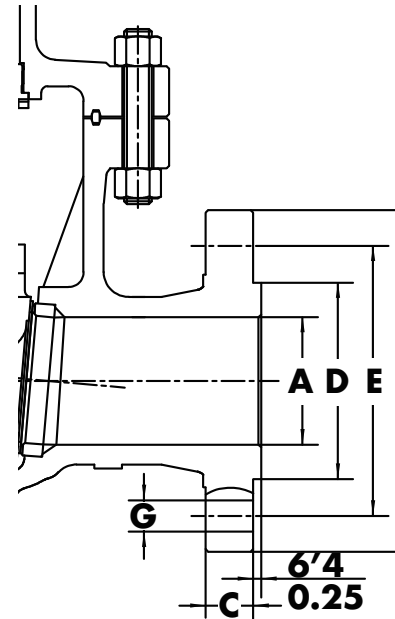
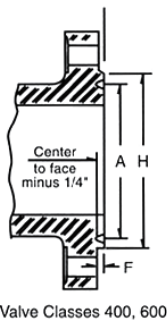


Fig. 2: Class 600



Valve Classes 400, 600

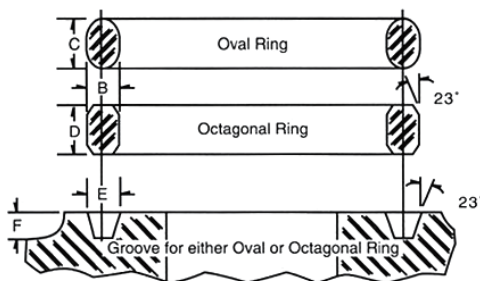


fig. 3: Oval rings fit grooves having either a flat or round bottom; octagonal rings only fit grooves having a flat bottom.

Flange Dimensions Fig. 3

Class	Size	Ring No.	A	B	C	D	E	F	H
Class 300 600	1/2	R11	1.344	0.250	0.438	0.375	0.281	0.219	2.00
	3/4	R13	1.688	0.312	0.562	0.500	0.344	0.250	2.50
	1	R16	2.000	0.312	0.562	0.500	0.344	0.250	2.75
	1-1/4	R18	2.375	0.312	0.562	0.500	0.344	0.250	3.12
	1-1/2	R20	2.688	0.312	0.562	0.500	0.344	0.250	3.56
	2	R23	3.250	0.438	0.688	0.625	0.469	0.312	4.25
	2-1/2	R26	4.000	0.438	0.688	0.625	0.469	0.312	5.00
	3	R31	4.875	0.438	0.688	0.625	0.469	0.312	5.75
	3-1/2	R34	5.188	0.438	0.688	0.625	0.469	0.312	6.25
	4	R37	5.875	0.438	0.688	0.625	0.469	0.312	6.88
	5	R41	7.125	0.438	0.688	0.625	0.469	0.312	8.25
	6	R45	8.312	0.438	0.688	0.625	0.469	0.312	9.50
	8	R49	10.625	0.438	0.688	0.625	0.469	0.312	11.88
	10	R53	12.750	0.438	0.688	0.625	0.469	0.312	14.00
	12	R57	15.000	0.438	0.688	0.625	0.469	0.312	16.25
	14	R61	16.500	0.438	0.688	0.625	0.469	0.312	18.00
	16	R65	18.500	0.438	0.688	0.625	0.469	0.312	20.00
	18	R69	21.000	0.438	0.688	0.625	0.469	0.312	22.62
	20	R73	23.000	0.500	0.750	0.688	0.531	0.375	25.00
	24	R77	27.250	0.625	0.875	0.812	0.656	0.438	29.50