



CLASS 150 STAINLESS STEEL BALL VALVE

FIG.# 4E-41C8M16RGF-2F

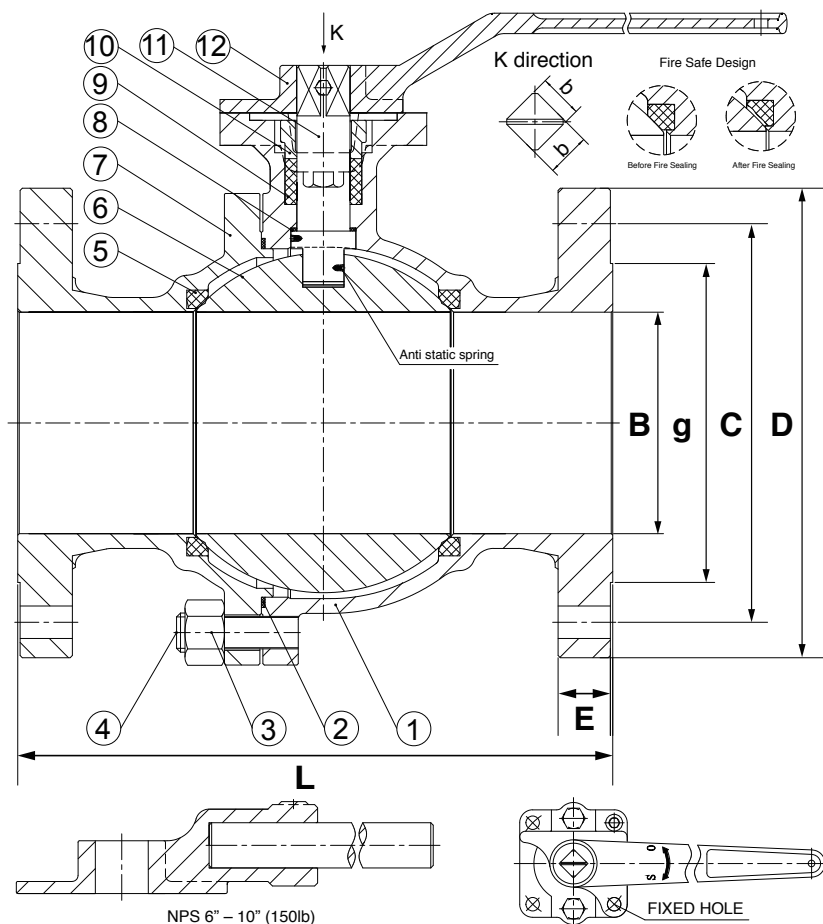
Sizes: 2"-8" @ ANSI 150

FULL STAINLESS STEEL BALL VALVE

316 Stainless Steel Body, Ball and Stem
 2-PCS, Floating Ball, Full Port, Nace
 ISO 5211 Mounting Pad
 Fire Safe Design and Anti-Static*
 Design and Manufacture: API 6D
 Face to Face Dimensions: ASME B16.10
 Flange Ends Dimensions: ASME B16.5
 Fire Safe Test: API 607
 Pressure Test: API 598

CLASS	Pressure Test (MPa)		
	Shell Test	Seat Test	Air Test
150 LB	3.0	2.2	0.6
Applicable Temperature	- 29°C (- 20°F) ~ 120°C (248°F)		
Applicable Media	W.O.G.		

MATERIAL LIST		
No.	Part Name	Material
1.	Body	A351 CF8M
2.	Body Gasket	SS 316 + Graphite
3.	Nut	A194 - 8M
4.	Stud	A193 - B8M
5.	Seat	RPTFE
6.	Ball	A182 - F316
7.	Bonnet	A351 CF8M
8.	Thrust Washer	PTFE
9.	Packing	Graphite
10.	Gland	A351 CF8M
11.	Stem	SS 316
12.	Lever	A216 - WCB



DIMENSIONS & WEIGHT						
SIZE	unit	2"	3"	4"	6"	8"
D	inch	5.91	7.48	9.06	11.02	13.58
	mm	150	190	230	280	345
L	inch	7.01	7.99	9.02	15.51	17.99
	mm	178	203	229	394	457
B	inch	1.93	2.99	3.94	5.91	7.91
	mm	49	76	100	150	201
E	inch	0.56	0.69	0.88	0.94	1.06
	mm	14.3	17.5	22.3	23.9	27.0
C	inch	4.74	6.00	7.50	9.50	11.75
	mm	120.5	152.4	190.5	241.3	298.5
g	inch	3.62	5.00	6.18	8.50	10.63
	mm	92	127	157	215.9	269.9
b X b		14 X 14	18 X 18	22 X 22	27 X 27	32 X 32
Weight	lbs.	23.8	45.8	83.7	163.1	286.6
	kgs.	10.8	20.8	38	74	130
Torque	N-m	42	112	182	658	1092



NOTE: 1. Handwheel, lever and Gear Operator must be specified at the point of order.
 2. Specifications subject to change without notice.

CLASS 300 STAINLESS STEEL BALL VALVE 2" - 4"



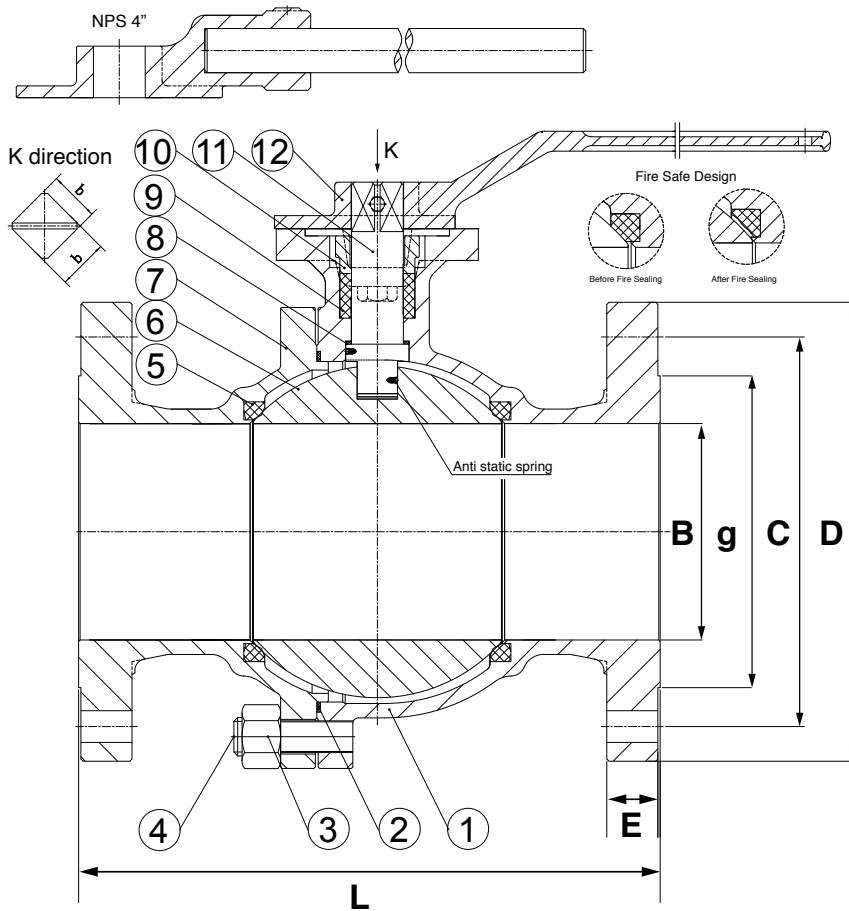
FIG.# 4E-43C8M16RGF-2F

Sizes: 2"-4" @ ANSI 300

FULL STAINLESS STEEL BALL VALVE

316 Stainless Steel Body, Ball and Stem
 2-PCS, Floating Ball, Full Port, Nace
 ISO 5211 Mounting Pad
 Fire Safe Design and Anti-Static*
 Design and Manufacture: API 6D
 Face to Face Dimensions: ASME B16.10
 Flange Ends Dimensions: ASME B16.5
 Fire Safe Test: API 607
 Pressure Test: API 598

CLASS	Pressure Test (MPa)		
	Shell Test	Seat Test	Air Test
150 LB	7.5	5.5	0.6
Applicable Temperature	- 29°C (- 20°F) ~ 120°C (248°F)		
Applicable Media	W.O.G.		



MATERIAL LIST		
No.	Part Name	Material
1.	Body	A351 CF8M
2.	Body Gasket	SS 316 + Graphite
3.	Nut	A194 - 8M
4.	Stud	A193 - B8M
5.	Seat	RPTFE
6.	Ball	A182 - F316
7.	Bonnet	A351 CF8M
8.	Thrust Washer	PTFE
9.	Packing	Graphite
10.	Gland	A351 CF8
11.	Stem	A276 - 316
12.	Lever	A216 - WCB

DIMENSIONS & WEIGHT				
SIZE	unit	2"	3"	4"
D	inch	6.50	8.27	10.04
	mm	165	210	255
L	inch	8.50	11.14	12.01
	mm	216	283	305
B	inch	1.93	2.99	3.94
	mm	49	76	100
E	inch	0.81	1.06	1.19
	mm	20.7	27.0	30.2
C	inch	5.00	6.63	7.87
	mm	127	168.5	200
g	inch	3.62	5.00	6.18
	mm	92	127	157
b X b		18 X 18	22 X 22	25 X 25
Weight	lbs.	33.0	69.5	108.0
	kgs.	15.0	31.5	49.0
Torque	N·m	84	196	364

NOTE: 1. Handwheel, lever and Gear Operator must be specified at the point of order.
 2. Specifications subject to change without notice.



CLASS 300 STAINLESS STEEL BALL VALVE 6" – 8"

FIG.# 4E-43C8M16RGF-2F

Sizes: 6" – 8" @ ANSI 300

FULL STAINLESS STEEL BALL VALVE

316 Stainless Steel Body, Ball and Stem

2-PCS, Floating Ball, Full Port, Nace

ISO 5211 Mounting Pad

Fire Safe Design and Anti-Static*

Design and Manufacture: API 6D

Face to Face Dimensions: ASME B16.10

Flange Ends Dimensions: ASME B16.5

Fire Safe Test: API 607

Pressure Test: API 598

CLASS	Pressure Test (MPa)		
	Shell Test	Seat Test	Air Test
150 LB	7.5	5.5	0.6
Applicable Temperature		- 29°C (- 20°F) ~ 120°C (248°F)	
Applicable Media		W.O.G.	

MATERIAL LIST		
No.	Part Name	Material
1.	Body	A351 CF8M
2.	Body Gasket	SS 316 + Graphite
3.	Nut	A194 - 8M
4.	Stud	A193 - B8M
5.	Seat	RPTFE
6.	Ball	A182 - F316
7.	Bonnet	A351 CF8M
8.	Thrust Washer	PTFE
9.	Packing	Graphite
10.	Gland	A351 CF8
11.	Stem	A276 - 316
12.	Key	A276 - 410
13.	Drving	Assembled

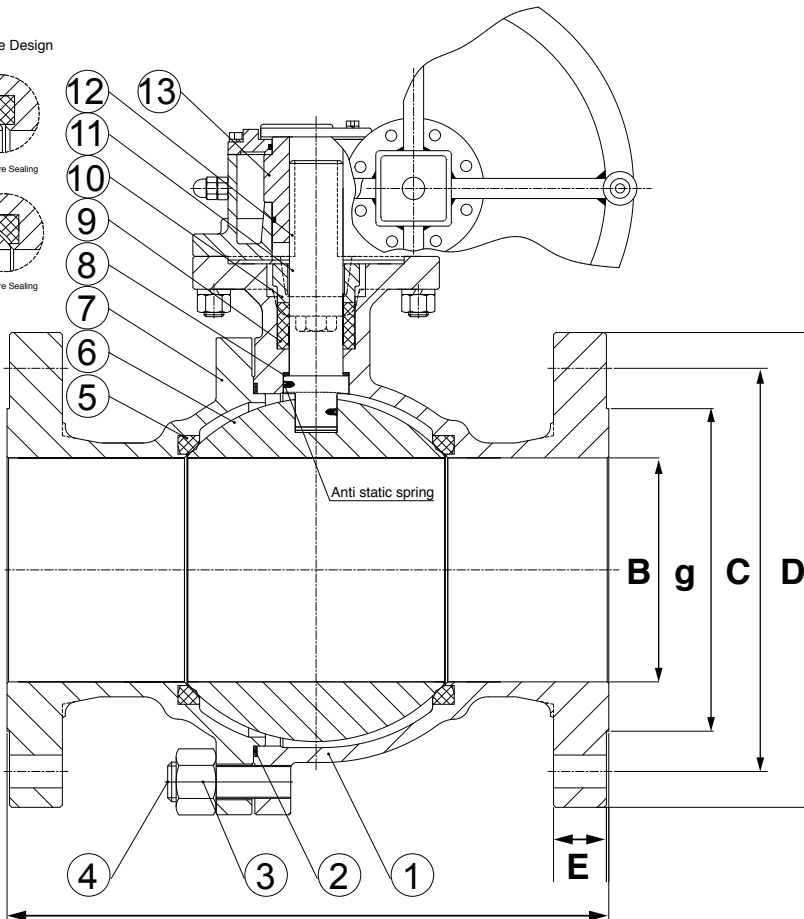
Fire Safe Design



Before Fire Sealing



Alter Fire Sealing



DIMENSIONS & WEIGHT			
SIZE	unit	6"	8"
D	inch	12.60	14.96
	mm	320	380
L	inch	15.87	19.76
	mm	403	502
B	inch	5.91	7.91
	mm	150	201
E	inch	1.38	1.56
	mm	35.0	39.7
C	inch	10.63	12.99
	mm	269.9	330
g	inch	8.50	10.63
	mm	215.9	269.9
Weight	lbs.	244.7	407.9
	kgs.	111.0	185.0
Torque	N-m	1310	2170



NOTE: 1. Handwheel, lever and Gear Operator must be specified at the point of order.

2. Specifications subject to change without notice.