



Cast Steel - Gate Globe Check - Index

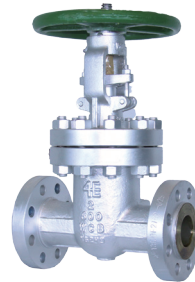
4E VALVE API WCB Cast Steel Gate Valves, CLASS 150 - 600



150# GATE VALVE
IS 2"- 24" | BO 26"- 42"



300# GATE VALVE
IS 2"- 16" | BO 18"- 36"



600# GATE VALVE
IS 2"- 12" | BO 14"- 24"



150# NRS GATE VALVE
IS 2"- 12"

4E VALVE API WCB Cast Steel Globe Valves, CLASS 150 - 600



150# GLOBE VALVE
IS 2"- 12" | BO 18"- 24"



300# GLOBE VALVE
IS 2"- 12" | BO 14"- 18"

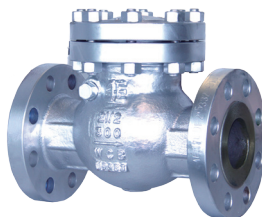


600# GLOBE VALVE
IS 2"- 8" | BO 10"- 16"

4E VALVE API WCB Cast Steel Check Valves, CLASS 150 - 600



150# CHECK VALVE
IS 2"- 16" | BO 18"- 30"



300# CHECK VALVE
IS 2"- 12" | BO 14"- 30"



600# CHECK VALVE
IS 2"- 10" | BO 12"- 24"

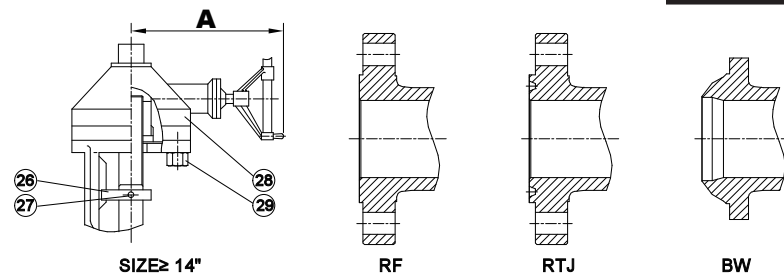
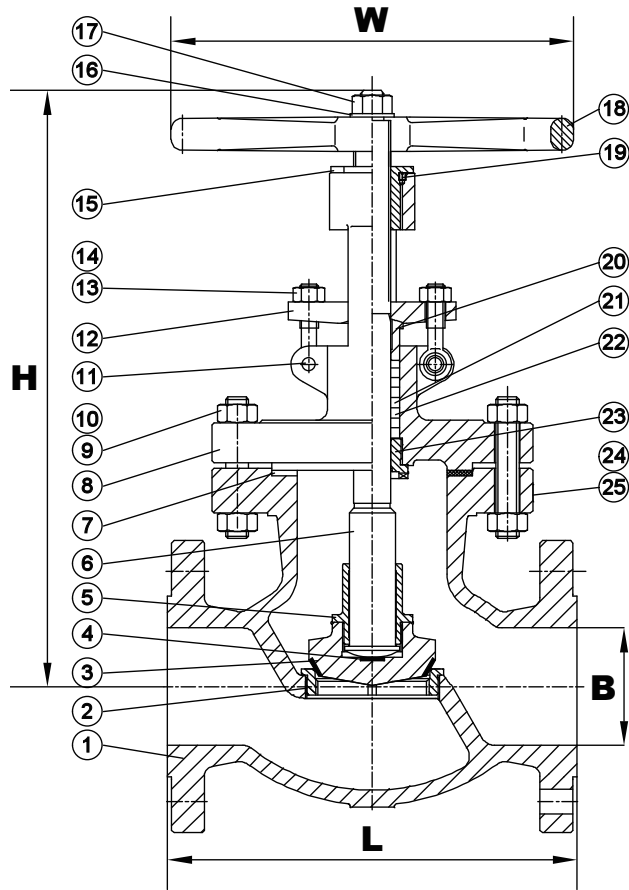
IS - IN STOCK
BO - BACK ORDER



Class 150 Globe Valve

FIG.# 21WCB8F

OS & Y, Rising Stem, Plug Disc, Bolted Bonnet
Threaded Seat Ring, ASTM A216 WCB



*GEAR OPERATOR
RECOMMENDED.

Weights are approximate
and construction is subject
to change without notice.



STANDARDS COMPLIANCE:

Basic Design	BS 1873 & ASME B16.34
Face to Face Dimensions	ANSI B 16.10
End Flange Dimensions	ASME B16.5 ASME B16.25
Test Standard	API 598

MATERIAL LIST

No.	Part Name	ASTM Specification (Specs-Grades/Types)				
		A216 (STOCKING) WCB	A352 LCC	A217 WC6	A217 C5	A351 CF8M
1.	Body	A216 WCB	A352 LCC	A217 WC6	A217 C5	A351 CF8M
2.	Seat Ring	A105	A350 LF2, A182 F11, A182 F5, A182 F304 or A182 F316			
	" Surface	HF (STL.6/CoCr-A)	13CR(ER410), 304, 316 or Monel			
3.	Disc	A105	A350 LF2, A182 F11, A182 F5, A182 F304 or A182 F316			
	" Seating Surface	13CR(ER410)	HF (STL.6/CoCr-A), 304, 316 or Monel			
4.	Thrust Plate	13CR	304 or 316			
5.	Disc Cover	A276 410	A182 F304, A182 F316 or Monel			
6.	Stem	A182 F6a	A182 F304, A182 F316, 17-4PH or Monel			
7.	Gasket	08F+Flexible Graphite	F304 or F316 + Flexible Graphite			
8.	Bonnet	A216 WCB	A352 LCC	A217 WC6	A217 C5	A351 CF8M
9.	Bolt	A193 B7	A320 L7	A193 B16	A193 B16	A193 B8
10.	Nut	A194 2H	A194 2H	A194 4	A194 4	A194 8
11.	Pin	CARBON STEEL	A276 Type 316			
12.	Gland Flange	A216 WCB	A352 LCC	A217 WC6	A217 C5	A351 CF8M
13.	Eye Bolt	A193 B7	A320 L7	A193 B16	A193 B16	A193 B8
14.	Eye Nut	A194 2H	A194 2H	A194 4	A194 4	A194 8
15.	Stem Nut	A439-D2				
16.	Gasket	CARBON STEEL	A276 Type 316			
17.	Handwheel Nut	CARBON STEEL	316			
18.	Handwheel	DUCTILE IRON				
19.	Screw	CARBON STEEL	316			
20.	Gland	A276 410	A182 F304, A182 F316 or Monel			
21.	Packing	F304+Graphite+C.I.				
22.	Packing	Flexible Graphite+C.I.				
23.	Back Seat	A276 410	A182 F304, A182 F316 or Monel			
24.	Rivet	AISI 304				
25.	Name Plate	AISI 304				
26.	Guide	CARBON STEEL	A276 Type 316			
27.	Pin	CARBON STEEL	A276 Type 316			
28.	Gear Box	CARBON STEEL				
29.	Hex Bolt	CARBON STEEL	316			

DIMENSION & WEIGHT

SIZE	unit	2"	2-2/1"	3"	4"	5"	6"	8"	10"	12"	14"	16"	18"	20"	24"
L(RF-BW)	inch	8	8.5	9.5	11.5	14	16	19.5	24.5	27.5	31	36	38.5	38.5	51
	mm	203	216	241	292	356	406	495	622	699	787	914	978	978	1295
L(RTJ)	inch	8.5	9	10	12	14.5	16.5	20	25	28	31.5	36.5	39.02	39.02	51.5
	mm	216	229	254	305	368	419	508	635	711	800	927	991	991	1308
A	inch	-	-	-	12.2	-	12.2	13.58	16.54	16.54	19.88	19.88	19.88	19.88	24.02
	mm	-	-	-	310	-	310	345	420	420	505	505	505	505	610
B	inch	2	2.52	3	4	5	6	8	10	12	13.25	15.25	17.25	19.25	23.25
	mm	51	64	76	102	127	152	203	254	305	337	387	438	489	591
H	inch	12.83	13.78	13.94	17.72	17.99	18.86	21.65	25.43	32.84	35.63	39.37	45.67	43.31	51.97
	mm	326	350	354	450	457	479	550	646	834	905	1000	1160	1100	1320
W	inch	7.87	9.84	9.84	11.81	11.81	13.78	15.75	17.72	22.05	27.95	27.95	27.95	27.95	31.50
	mm	200	250	250	300	300	350	400	450	560	710*	710*	710*	710*	800*
WT.	KG	22	31	40	59	75	96	161	278	506	519	810	1040	1172	2032
	LB	49	68	88	130	165	212	355	613	1116	1144	1786	2293	2584	4480

Class 300 Globe Valve

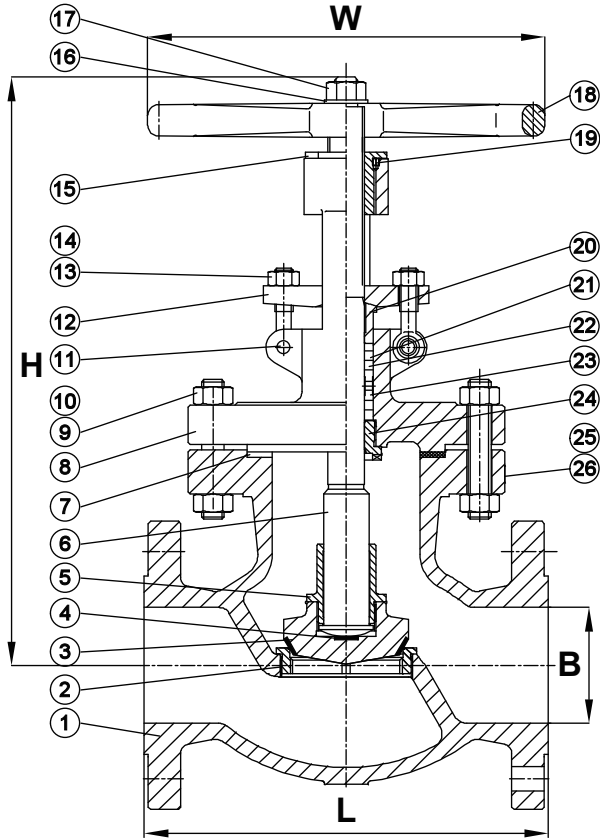


FIG.# 23WCB8F

OS & Y, Rising Stem, Plug Disc, Bolted Bonnet
Threaded Seat Ring, ASTM A216 WCB

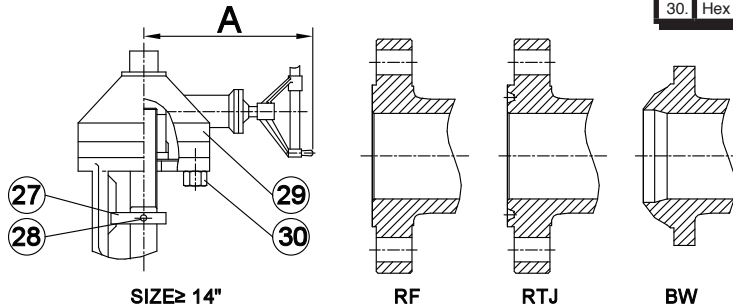
STANDARDS COMPLIANCE:

Basic Design	BS 1873 & ASME B16.34
Face to Face Dimensions	ANSI B 16.10
End Flange Dimensions	ASME B16.5 ASME B16.25
Test Standard	API 598



MATERIAL LIST

No.	Part Name	ASTM Specification (Specs-Grades/Types)				
		A216 (STOCKING) WCB	A352 LCC	A217 WC6	A217 C5	A351 CF8M
1.	Body	A216 WCB	A352 LCC	A217 WC6	A217 C5	A351 CF8M
2.	Seat Ring	A105	A350 LF2, A182 F11, A182 F5, A182 F304 or A182 F316			
	" Surface	HF (STL.6/CoCr-A)	13CR(ER410), 304, 316 or Monel			
3.	Disc	A105	A350 LF2, A182 F11, A182 F5, A182 F304 or A182 F316			
	" Seating Surface	13CR(ER410)	HF (STL.6/CoCr-A), 304, 316 or Monel			
4.	Thrust Plate	13CR	304 or 316			
5.	Disc Cover	A276 410	A182 F304, A182 F316 or Monel			
6.	Stem	A182 F6a	A182 F304, A182 F316, 17-4PH or Monel			
7.	Gasket	08F+Flexible Graphite	F304 or F316 + Flexible Graphite			
8.	Bonnet	A216 WCB	A352 LCC	A217 WC6	A217 C5	A351 CF8M
9.	Bolt	A193 B7	A320 L7	A193 B16	A193 B16	A193 B8
10.	Nut	A194 2H	A194 2H	A194 4	A194 4	A194 8
11.	Pin	CARBON STEEL	A276 Type 316			
12.	Gland Flange	A216 WCB	A352 LCC	A217 WC6	A217 C5	A351 CF8M
13.	Eye Bolt	A193 B7	A320 L7	A193 B16	A193 B16	A193 B8
14.	Eye Nut	A194 2H	A194 2H	A194 4	A194 4	A194 8
15.	Stem Nut	A439-D2				
16.	Gasket	CARBON STEEL	A276 Type 316			
17.	Handwheel Nut	CARBON STEEL	316			
18.	Handwheel	DUCTILE IRON				
19.	Screw	CARBON STEEL	316			
20.	Gland	A276 410	A182 F304, A182 F316 or Monel			
21.	Packing	F304+Graphite+C.I.				
22.	Packing	Flexible Graphite+C.I.				
23.	Distance Ring	A276 410	A182 F304, A182 F316 or Monel			
24.	Back Seat	A276 410	A182 F304, A182 F316 or Monel			
25.	Rivet	AISI 304				
26.	Name Plate	AISI 304				
27.	Guide	CARBON STEEL	A276 Type 316			
28.	Pin	CARBON STEEL	A276 Type 316			
29.	Gear Box	CARBON STEEL				
30.	Hex Bolt	CARBON STEEL	316			



SIZE ≥ 14"

RF

RTJ

BW

DIMENSION & WEIGHT

SIZE	unit	2"	2-2/1"	3"	4"	5"	6"	8"	10"	12"	14"	16"	18"
L(RF-BW)	inch	10.50	11.50	12.50	14.00	15.75	17.50	22.00	24.50	28.00	33.00	34.00	38.50
	mm	267	292	318	356	400	444	559	622	711	838	864	977
L(RTJ)	inch	11.14	12.13	13.11	14.61	16.38	18.11	22.64	25.12	28.62	33.62	34.65	39.09
	mm	283	308	333	371	416	460	575	638	727	854	880	993
A	inch	-	-	-	-	-	13.58	16.54	16.54	19.88	19.88	19.88	19.88
	mm	-	-	-	-	-	345	420	420	505	505	505	505
B	inch	2.00	2.52	3.00	4.00	5.00	6.00	8.00	10.00	12.00	13.25	15.25	17.01
	mm	51	64	76	102	127	152	203	254	305	337	387	432
H	inch	12.80	15.35	16.14	19.92	20.55	22.24	31.89	32.17	34.29	36.22	41.54	45.67
	mm	325	390	410	506	522	565	810	817	871	920	1055	1160
W	inch	7.87	9.84	9.84	11.81	13.78	15.75	19.69	22.05	22.05	27.95	27.95	27.95
	mm	200	250	250	300	350	400	500	560	560	710*	710*	710*
WT.	KG	29	41	55	79	130	148	292	412	568	723	1072	1343
	LB	64	90	121	174	287	326	644	908	1252	1594	2363	2961



*GEAR OPERATOR RECOMMENDED.

Weights are approximate and construction is subject to change without notice.



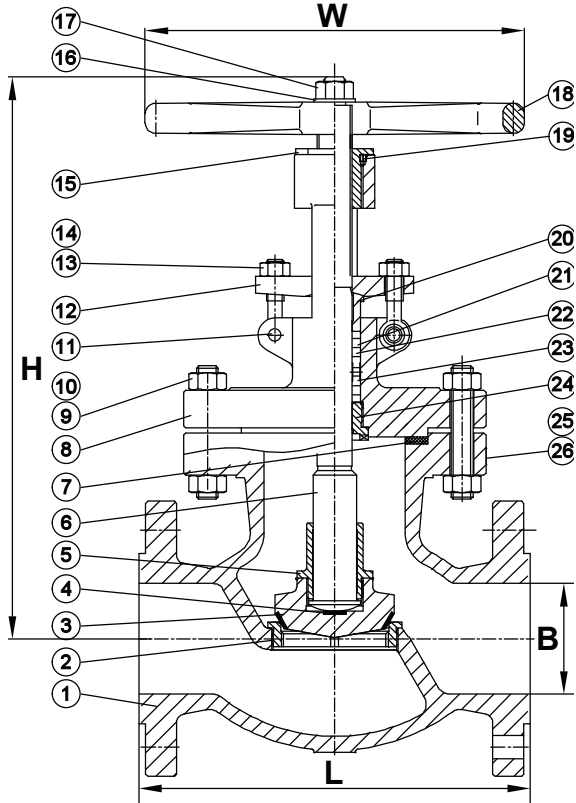
Class 600 Globe Valve

FIG.# 26WCB8F

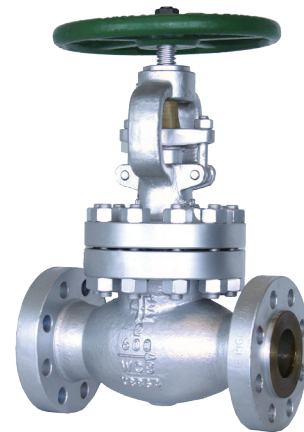
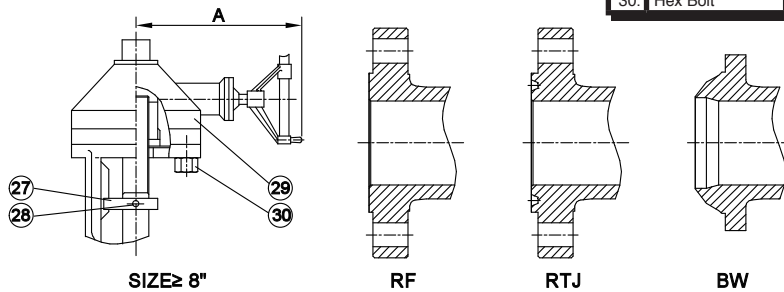
OS & Y, Rising Stem, Plug Disc, Bolted Bonnet
Threaded Seat Ring, ASTM A216 WCB

STANDARDS COMPLIANCE:

Basic Design	BS 1873 & ASME B16.34
Face to Face Dimensions	ANSI B 16.10
End Flange Dimensions	ASME B16.5 ASME B16.25
Test Standard	API 598



		ASTM Specification (Specs-Grades/Types)				
No.	Part Name	A216 (STOCKING) WCB	A352 LCC	A217 WC6	A217 C5	A351 CF8M
1.	Body	A216 WCB	A352 LCC	A217 WC6	A217 C5	A351 CF8M
2.	Seat Ring	A105	A350 LF2, A182 F11, A182 F5, A182 F304 or A182 F316			
	" Surface	HF (STL.6/CoCr-A)	13CR(ER410), 304, 316 or Monel			
3.	Disc	A105	A350 LF2, A182 F11, A182 F5, A182 F304 or A182 F316			
	" Seating Surface	13CR(ER410)	HF (STL.6/CoCr-A), 304, 316 or Monel			
4.	Thrust Plate	13CR				
5.	Disc Cover	A276 410				
6.	Stem	A182 F6a				
7.	Gasket	08F+Flexible Graphite				
8.	Bonnet	A216 WCB	A352 LCC	A217 WC6	A217 C5	A351 CF8M
9.	Bolt	A193 B7	A320 L7	A193 B16	A193 B16	A193 B8
10.	Nut	A194 2H	A194 2H	A194 4	A194 4	A194 8
11.	Pin	CARBON STEEL				
12.	Gland Flange	A216 WCB	A352 LCC	A217 WC6	A217 C5	A351 CF8M
13.	Eye Bolt	A193 B7	A320 L7	A193 B16	A193 B16	A193 B8
14.	Eye Nut	A194 2H	A194 2H	A194 4	A194 4	A194 8
15.	Stem Nut	A439-D2				
16.	Gasket	CARBON STEEL				
17.	Handwheel Nut	CARBON STEEL				
18.	Handwheel	DUCTILE IRON				
19.	Screw	CARBON STEEL				
20.	Gland	A276 410	A182 F304, A182 F316 or Monel			
21.	Packing	F304+Graphite+C.I.				
22.	Packing	Flexible Graphite+C.I.				
23.	Distance Ring	A276 410	A182 F304, A182 F316 or Monel			
24.	Back Seat	A276 410	A182 F304, A182 F316 or Monel			
25.	Rivet	AISI 304				
26.	Name Plate	AISI 304				
27.	Guide	CARBON STEEL				
28.	Pin	CARBON STEEL				
29.	Gear Box	CARBON STEEL				
30.	Hex Bolt	CARBON STEEL				



		DIMENSION & WEIGHT										
SIZE	unit	2"	2-1/2"	3"	4"	6"	8"	10"	12"	14"	16"	
L(RF-BW)	inch	11.50	13.00	14.00	17.00	22.00	26.00	31.00	33.00	35.00	39.00	
	mm	292	330	356	432	559	660	787.4	838	889	991	
L(RTJ)	inch	11.62	13.11	14.13	17.13	22.13	26.14	31.12	33.11	35.11	39.13	
	mm	295	333	359	435	562	664	790.4	841	892	994	
A	inch	-	-	-	13.56	16.54	19.88	19.88	19.88	24.02	24.02	
	mm	-	-	-	345	420	505	505	505	610	610	
B	inch	2.00	2.52	3.00	4.00	6.00	7.88	9.76	11.73	12.88	14.76	
	mm	51	64	76	102	152	200	248	298	327	375	
H	inch	14.76	19.02	18.39	21.54	29.69	32.87	34.13	39.45	44.96	47.64	
	mm	375	483	467	547	754	835	867	1002	1142	1210	
W	inch	9.84	11.81	13.78	15.75	19.69	27.95	27.95	27.95	31.50	31.50	
	mm	250	300	350	400	500	710*	710*	710*	800*	800*	
WT.	KG	35	58	65	117	275	424	700	900	1395	1750	
	LB	77	128	143	258	606	935	1543	1984	3075	3858	

*GEAR OPERATOR RECOMMENDED.
Weights are approximate and construction is subject to change without notice.