



**Short Neck Wafer Notched Style (aka. Industrial Style)  
FIG.# 4E-IS200-B (Buna Seat); 4E-IS200-V (Viton Seat);**

**Pressure: 200 psi; ANSI Class 125/150 Capable;  
Stocking Sizes: 2" - 12"  
Back Order Sizes: 14" - 36"**

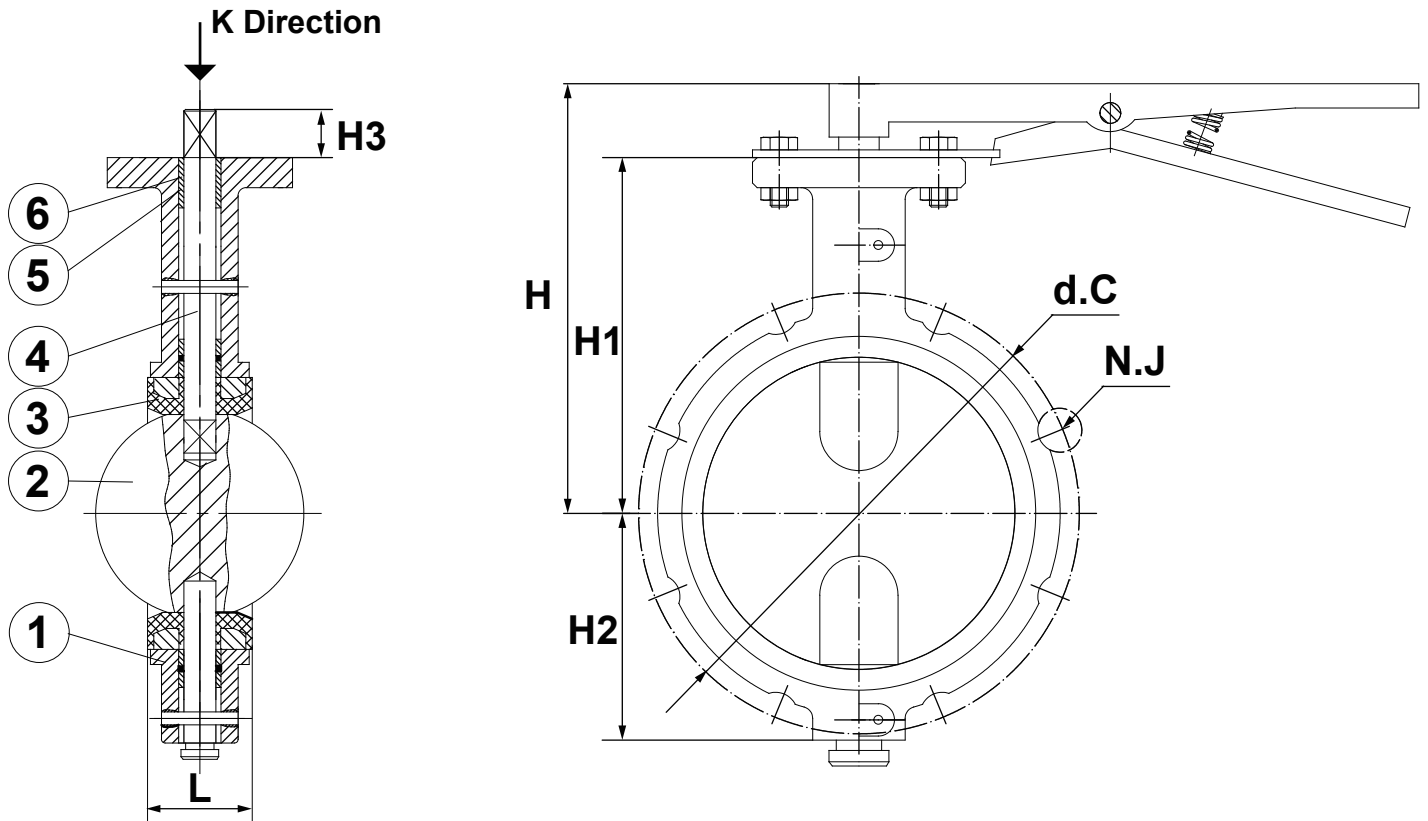
Short neck; Pinless Disk; Notched Body;  
Ductile Iron body with Epoxy Coating;  
Seat material available in Buna, Viton or EPDM;  
Double D Shaft (in stock) Stem or Square Shaft Style;  
Operational Style: Lever

Testing Pressure	Hydrostatic	Shell	Seal
		2" - 12": 300 psi	2" - 12": 220 psi
		14" - 24": 225 psi	14" - 24": 165 psi
		30" - 36": 150 psi	30" - 36": 110 psi
Standard	Inspection & Test	API 598	
	End Standard	ANSI B16.5 CL150	
	Design	API 609	

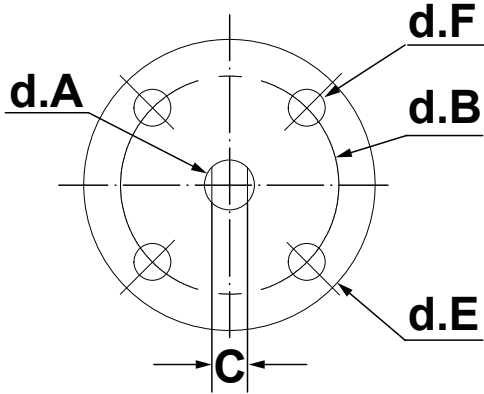
MATERIAL LIST			
No.	Part Name	Material	
1.	Body	Ductile Iron	
2.	Disc	Ductile Iron (Nickel Plated)	CF8M
3.	Seat	BUNA- N	Viton
4.	Stem	Double D Style SS 410	
5.	Bushing	PTFE	
6.	O - Ring	BUNA- N	Viton



**NOTE:** 1. Lever and Gear Operator must be specified at the point of order.  
2. Due to the continuous development of our products, there may be short-term difference between our actual product specifications and the information shown on our cutsheet.



### K Direction



- NOTE:**
3. 'd.' is the abbreviation for diameter.
  4. Dimension 'N' is applicable to Lug Style Valves. Dimension 'M' is unified Inch Screw Thread, coarse pitch series (UNC) per ANSI B1.1.
  5. Dimensions and weights are for reference only.

DIMENSIONS & WEIGHT											
SIZE	unit	2"	2-1/2"	3"	4"	5"	6"	8"	10"	12"	
H	inch	5.157	5.709	6.299	7.205	7.244	7.756	9.331	11.417	12.441	
	mm	131	145	160	183	184	197	237	290	316	
H1	inch	3.976	4.528	4.921	6.024	6.063	6.575	8.15	10.118	11.024	
	mm	101	115	125	153	154	167	207	257	280	
H2	inch	2.756	3.031	3.307	3.858	4.331	4.961	6.102	7.402	9.449	
	mm	70	77	84	98	110	126	155	188	240	
H3	inch	1.181	1.181	1.181	1.181	1.181	1.181	1.417	1.417	1.417	
	mm	30	30	30	30	30	30	36	36	36	
L	inch	1.811	1.929	1.929	2.165	2.303	2.323	2.52	2.815	3.189	
	mm	46	49	49	55	58.5	59	64	71.5	81	
d.A	inch	0.5	0.5	0.5	0.622	0.75	0.75	0.874	1.126	1.252	
	mm	12.7	12.7	12.7	15.8	19.05	19.05	22.2	28.6	31.8	
ANSI B16.5	d.C	inch	4.744	5.492	6.004	7.5	8.504	9.508	11.752	14.252	17.008
		mm	120.5	139.5	152.5	190.5	216	241.5	298.5	362	432
	N.J	Qty.	4	4	4	8	8	8	8	12	12
		inch	0.748	0.748	0.748	0.748	0.866	0.866	0.866	0.984	0.984
d.E	mm	19	19	19	19	22	22	22	25	25	
	inch	3.543	3.543	3.543	3.543	3.543	3.543	4.921	4.921	5.906	
d.B	mm	90	90	90	90	90	90	125	125	150	
	inch	2.756	2.756	2.756	2.756	2.756	2.756	4.016	4.016	4.921	
d.F	mm	70	70	70	70	70	70	102	102	125	
	inch	0.354	0.354	0.354	0.354	0.354	0.354	0.433	0.433	0.512	
C	mm	9	9	9	9	9	9	11	11	13	
	inch	0.394	0.394	0.394	0.472	0.551	0.551	0.669	0.866	0.945	
Weight	mm	10	10	10	12	14	14	17	22	24	
	lbs.	5.8643	7.4516	7.65	10.9129	13.1836	16.9535	29.3215	44.9743	70.9888	
Torque	kgs.	2.66	3.38	3.47	4.95	5.98	7.69	13.3	20.4	32.2	
	N-m	20	28	38	71	115	170	330	510	660	