



# 4E 125# Cast Iron Y-Type Flanged Strainer



## APPLICATION

\*For the pipelines where the nominal pressure is  $\leq 125\text{LB}$  and filter out trash in the medium.

\*To protect piping systems and process equipment from unwanted foreign particles with minimum pressure loss.

## GENERAL FEATURES

\*Cast iron strainer with Flat Face flanges conforms to ASME/ANSI B16.1 125LB

\*Lead Free(NSF/ANSI 372)

\*All models are FBE coating, colors can be changed (NSF/WRAS APPROVED EPOXY POWDER)

\*Equipped with bolted cover

\*Stainless Steel perforated screen or mesh type screen

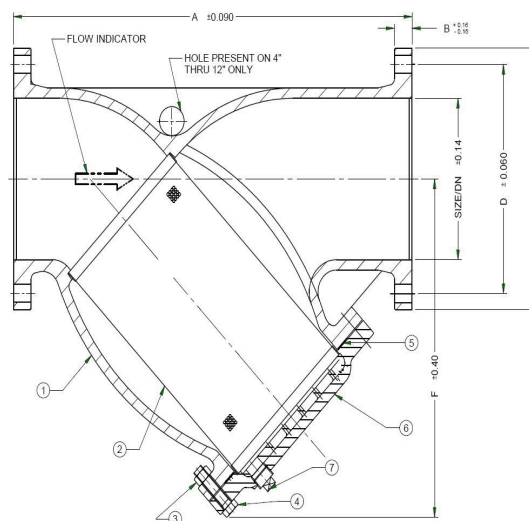
\*Tapped blow off connection with plug

\*100% Factory Pressure Testing as per API598



## MAIN PARTS MATERIALS

NO.	SPEC	MAIN PARTS	MATERIALS
1	ASTM A126B	BODY	CAST IRON
2	SS304	SCREEN	STAINLESS STEEL
3(N/A 2" THRU 8")	ASTM A307	NUT	CARBON STEEL
4	ASTM A307	BOLT	CARBON STEEL
5	N/A	GASKET	GRAPHITE
6	ASTM A126B	BONNET	CAST IRON
7	ASTM A307	PLUG	CARBON STEEL



## DIMENSIONS(UNIT:MM&INCH)

SIZE/DN		A		B		C		D		E		F		G	J	WEIGHT	
IN	MM	IN	MM	IN	MM	IN	MM	IN	MM	IN	MM	IN	MM	NPT	QTY	LBS.	KG
2"	50	8.86	225	0.63	16.00	5.98	152	4.75	121.0	0.75	19.05	6.30	160.0	1/2"	4	23.59	10.70
2 1/2"	65	10.75	273	0.69	17.50	7.01	178	5.50	139.5	0.75	19.05	7.60	193.0	1"	4	37.92	17.20
3"	80	11.50	292	0.75	19.10	7.48	190	6.00	152.5	0.75	19.05	8.43	214.0	1"	4	46.74	21.20
4"	100	13.86	352	0.94	24.00	8.98	228	7.50	190.5	0.75	19.05	10.58	268.7	1-1/4"	8	76.28	34.60
5"	125	16.38	416	0.94	24.00	10.00	254	8.50	215.9	0.88	22.35	12.50	317.5	1-1/4"	8	114.42	51.90
6"	150	18.50	470	1.00	25.40	10.98	279	9.50	241.5	0.88	22.35	14.59	370.5	1-1/2"	8	154.00	69.85
8"	200	21.38	543	1.12	28.50	13.46	342	11.75	298.5	0.88	22.35	17.67	448.7	1-1/2"	8	253.98	115.20
10"	250	25.98	660	1.18	30.00	15.98	406	14.25	362.0	1.00	25.40	20.08	510.0	2"	12	388.03	176.00
12"	300	30.00	762	1.25	31.80	19.02	483	17.00	432.0	1.00	25.40	23.23	590.0	2"	12	586.45	266.00

## WORKING CONDITIONS

Maximum working pressure:125LB (200PSI)

Maximum working temperature:200°C(392°F)

## SCREEN OPTIONS

\*Mesh type:20M/40M/80M/100M

\*Perforated type:P045/P125

Notes:

1.All screens are not available for all sizes

2.Please contact 4E (281)494-4300, sales@4evalve.com for specifications.



www.4evalve.com

This specification is provided for reference only.The presented products are open to modify by manufacturers without previous notice.